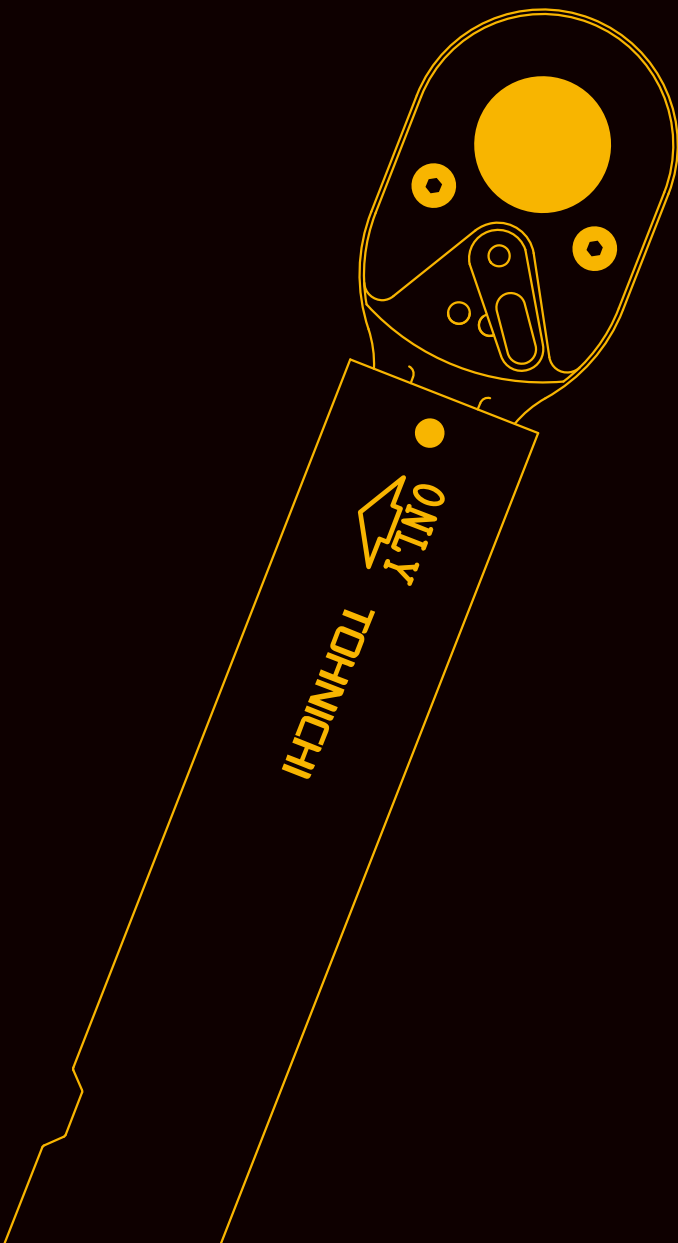
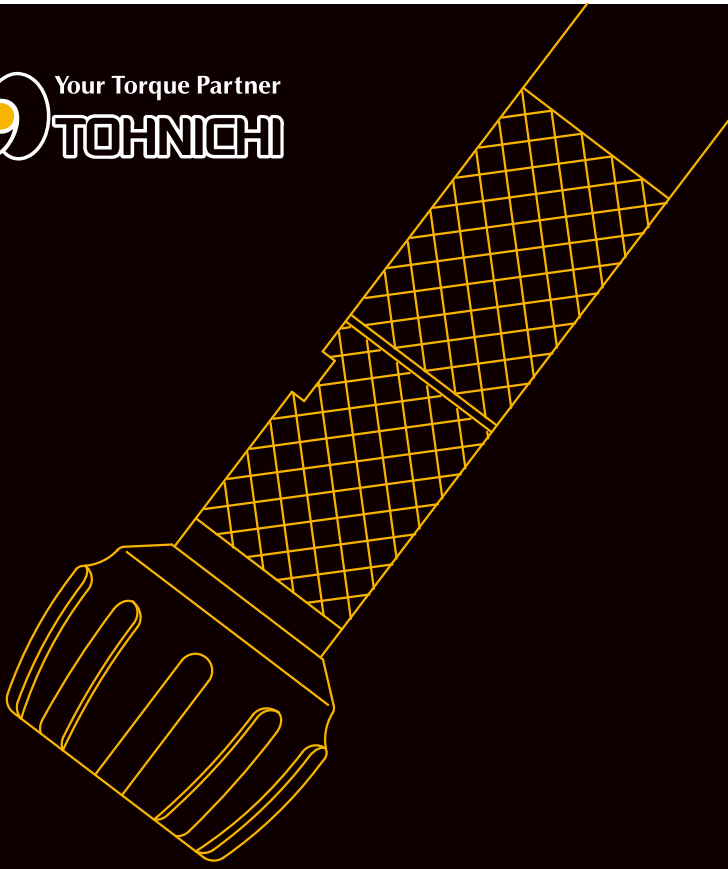


2023

Reference Guide



New Products

CSP6D Interchangeable Preset Torque Wrench

Compact design with high precision for limited access

QH6D and SH6D Interchangeable Head

Designed for CSP6D with compact slimline dimensions

DOTE10N4-G: Digital Torque Wrench Tester

New loading mechanism for highly accurate measurements

Scan QR Code for latest online information
<http://www.global-tohnichi.com>



CTA2-G

Digital Torque and Angle Wrench

Direction



RoHS

CTA100N2×15D-G



CTA500N2×22D-G



Assembly Digital Interchangeable Signal Re-Chargeable ISO6789:2003

- Snug and angle setting functions
- Buzzer/Light alerts to snug torque and angle completion
- Angle mode activates automatically, once snug torque is achieved.

Accuracy ±1%

Model	Torque Range [N·m]		Torque Range [kgf·m]		Torque Range [lbf·ft]		Angle Measuring Range		Angle Accuracy	Overall Length [mm]	Weight [kg]	Interchangeable Head
	Min.-Max.	1 digit	Min.-Max.	1 digit	Min.-Max.	1 digit	Min.-Max.	1 digit				
CTA50N2×12D-G	(2.5) 10-50	0.05	(0.25) 1-5	0.005	(1.85) 7.5-36.5	0.05			±2°+1 digit (Angular velocity is 30°/X~180°/s when the bolt turned to 90°)	282	0.58	QH12D
CTA100N2×15D-G	(5) 20-100	0.1	(0.5) 2-10	0.01	(3.8) 15-75	0.1				384	0.63	QH15D
CTA200N2×19D-G	(10) 40-200	0.2	(1) 4-20	0.02	(7.5) 30-150	0.2				475	0.78	QH19D
CTA360N2×22D-G	(18) 72-360	0.4	(1.8) 7-36	0.05	(13) 52-260	0.5	0-999°	1°		713	1.13	QH22D
CTA500N2×22D-G	(25) 100-500	0.5	(2.5) 10-50	0.05	(18) 72-360	0.5				949	4	
CTA850N2×32D-G	(43) 170-850	1.0	(4.3) 17-85	0.1	(31) 124-620	1			1387	5.14	QH32D	

- Note**
1. The value shown in () shows the lowest snug torque. Accuracy cannot be guaranteed for snug torque set beyond the operative torque range.
 2. Overall length does not include interchangeable head.
 3. PH (Pipe wrench head) type interchangeable head cannot be used with this model.
 4. CTA500N2×22D-G and CTA850N2×32D-G have knurled handles.

Standard Accessories Battery pack/BP-5, QH interchangeable head (P.45), Quick battery charger/BC-3-G (100-240V), cable/584

CTA2 Optional Accessories

Battery Pack (P.50)

Model
BP-5

Quick Battery Charger (P.50)

Model	Voltage
BC-3-G	100-240V

Printer (P.68)

Model
EPP16M3

Connecting Cable (P.49)

Part #	Applicable Model
575	CTA2-G - PC, EPP16M3 (D-SUB 9 Pin Female)
584	CTA2-G - PC (USB A Type)

- Note**
1. () shows pin shape of the connecting cables.
 2. Contact Tohnichi for other types of connecting cables.

Carrying Case (P.49)

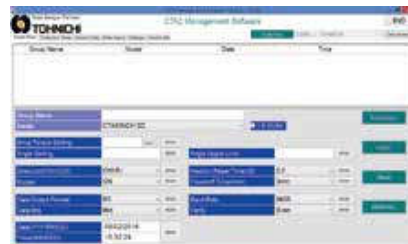
Model	Applicable Model Dimension [mm]	Weight [kg]
846	CTA50N2×12D-G, CTA100N2×15D-G H170 × W500 × D100	1.0
847	CTA200N2×19D-G, CTA360N2×22D-G H170 × W740 × D100	1.6

CTA2-G Features 2 Tightening Modes: Single Spindle and Production Tightening Modes

1. Single Spindle Tightening Mode: For angle method tightening of a single bolt tightening with snug torque, tightening angle and tightening angle upper limit settings.

2. Production Tightening Mode: For angle method tightening of multi spindle, with tightening torque, snug torque, 1st, 2nd and 3rd tightening angle, each upper limited angle, the numbers of spindles are registered.

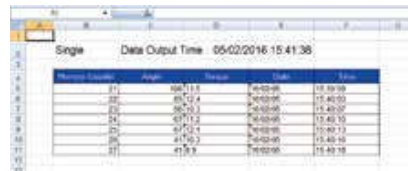
By using the included software package, various settings can be done through the PC and transferred to the wrench with the final tightening values being sent back to an Excel spreadsheet.



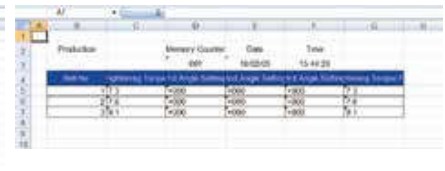
Single spindle tightening mode setting display



Production tightening mode setting display



Output data in single spindle tightening mode



Output data in production tightening mode

CTA2-G Common Specifications

Data Memory	999 data (Tightening torque, 1st angle value, 2nd angle value, 3rd angle value and final torque value)
Measurement Mode	Single spindle/Production mode
Data Output	RS232C compliant
Zero Adjustment	Auto zero (Angle, Torque)
Power	Ni-MH rechargeable battery
Continuous Use	20 hours with fully charged (8 hours by 1 hour recharging)
Recharging Time	3.5 hours
Operating Temperature [°C]	0-40

Other Functions	Snug torque, Tightening torque, Max. tightening torque, 1st, 2nd, 3rd angle, 1st, 2nd, 3rd max. angle, Number of bolts, Auto reset, Judgment, Setting through PC, Battery indicator
-----------------	---